

A woman with long brown hair, wearing a brown textured blazer over a white blouse with a large bow, stands in a modern office hallway. She is looking directly at the camera. The background shows a staircase with a glass railing and a hallway with warm lighting.

FRAME PLACES THAT WORK OFFICES

WORKBOOK

FRAME

PLACES THAT WORK

OFFICES



FRAME
OFFICES

*Nothing makes
commercial Real
Estate more valuable
than the buzzy
dynamics of the
people working in it*

Frame Offices



TABLE OF CONTENTS

PROPOSITION 8

OUR BIG IDEA 10

FOR THE PEOPLE 12

BRAND VALUES 14

OUR VISION 16

FRAME LIFE 18

DAILY WORK LIFE 20

LOCATIONS 24

HOSPITALITY 34

FOOD GURUS 36

WORK LIFE INGREDIENTS 40

MATERIALITY 42

FURNITURE 44

FIXTURES 47

URBAN BISTRO'S 50

EVENT SPACES AND VENUES 52

TABLE OF CONTENTS

MEETING ROOMS 56

OFFICES 58

A TRIBUTE TO YOUR WORKPLACE 60

COMMON AREAS 62

PUBLIC SPACES 64

CIRCULATION SPACES 68

WHY IT WORKS 72

COMMUNICATION 74

AWARD 76

COLOFON 78

PRO POSITION



A workplace that works for you. For solo entrepreneurs with great ambition, for SME companies with international targets and for multinationals renting several floors and still wanting to remain flexible.

OUR BIG IDEA



Our biggest aim in designing our locations is to unleash people's full creative energy to enhance their working life and radically improve the business processes.



FOR THE

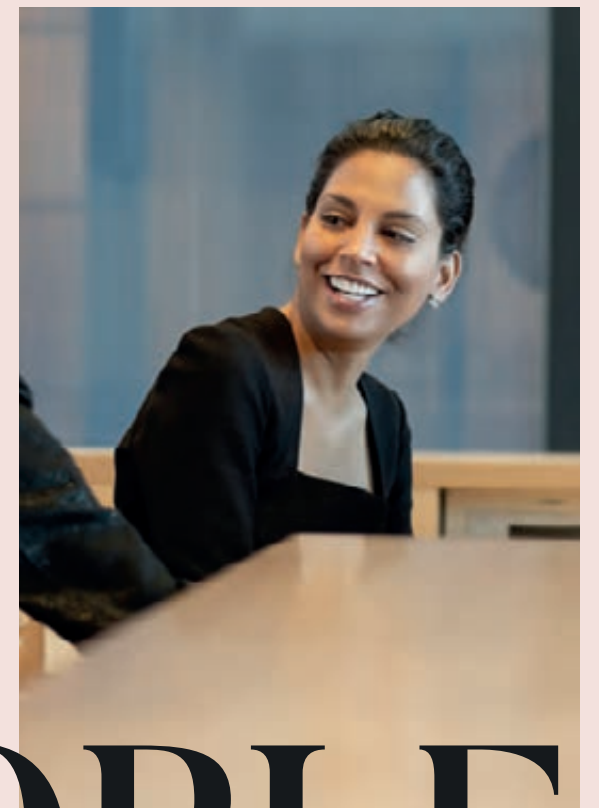


FLEX WORKERS

Do not get stuck on your freelance loneliness and join the Frame Business lounges at all our locations. Likeminded people with the same ambitions and challenges boost your bliss for work and support prospects for better networking.

COMPANIES

For companies with a future focus the opportunity of flexibly scaling and working will make them most valuable over the next decade.



PEOPLE

BRAND

WHAT IT IS

Flexible
Personal
Luxurious
Activation
Sustainable
Innovative
Comfortable
Secure
Confident



VALUES

WHAT IT ISN'T

~~Static~~
~~Distant~~
~~Cheap~~
~~Passive~~
~~Unsustainable~~
~~Traditional~~
~~Uncomfortable~~
~~Unsafe~~
~~Insecure~~





We design places that invest in individuals so you feel valued and cared for. Inviting design makes innovations and inspiration a second nature to everyone.

OUR VISION



FRAME LIFE

Places that work

DAILY LIFE

Your daily working kickstart at Frame Offices is to be designed by yourself. Our food gurus provide you the best breakfast and wonderful coffees in the morning.



The buzzy community dynamics boost your bliss for work and power up your working engine. During the day lovely lunches and healthy refreshments will keep you focused.



DAILY LIFE







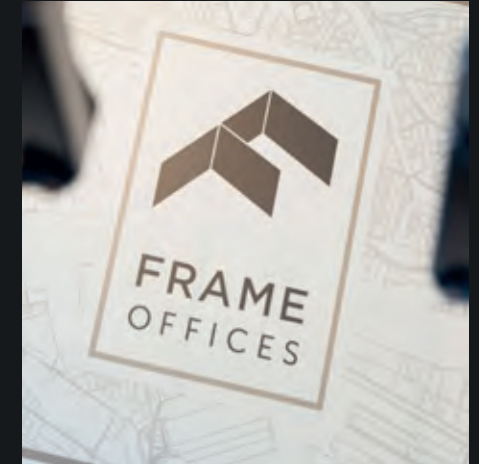
FRAME OFFICES

LOCATIONS



With nationwide coverage, locations at Central Stations and a growing urban network, Frame Offices offers business hubs for project teams and meetings.





Meeting rooms, focus rooms, gyms and 'Happy Zen' spaces are essentials. To cheer the deal or to cool the workday, you'll be happy to find bars and sunny (rooftop) terraces in the buildings.





HOSPITALITY



Our hospitality team loves to take care of you and your visitors. Nothing makes a place more personal than a sunny smile, lively interest, and anticipated support.

The Frame Offices teams will create incredible service experiences and help you out with office support if needed. Our dedicated teams will take care of all your needs down to the last detail.



FOOD GURUS



Creative culinary gurus partner with Frame Offices to delight you all-day with a line-up of sweet and savory breakfast foods, seasonal tasty lunches and extensive dinner options. Bon appétit.

Our food gurus will daily cheer you up with the best coffees and healthy refreshments. In the early and late evenings you and your guests can enjoy the finest wines and drinks. Some of our Urban Bistro's even have a hard-to-resist cocktail list. Everything to cheer the deal or to celebrate business outcomes.



*Performance
is driven by
offering choices
in workplaces.
Work needs to work
for you.*

Frame Offices



WORK LIFE INGREDIENTS



Inspiring design reinforces work culture and gives a strong leverage in attracting talent. Also having a variety of workspaces to choose from is directly connected to a great workplace experience. With the right ingredients you will have the beginning of a work environment where your staff is happy to come to work.

Therefor Frame Offices offers inclusion of green spaces to boost concentration and perceived fresh air, happy working life services to work your household chores and great design to gain bliss for work.



In-house gyms, relaxing reload rooms, ionized air, green and smart parking, city gardens, five-star common areas and best-in-class hospitality. Our locations differ in look & feel, but all will give you great joy to work.

Materiality, design, and performance layer together in inspiring workplaces. Informal, authentic and remarkable spaces are creating workplaces where people want to gather, collaborate, and perform at their best.

The choices of materiality help them think better and support their ability to solve problems. Materiality matters.

MATERIALITY



FURNITURE



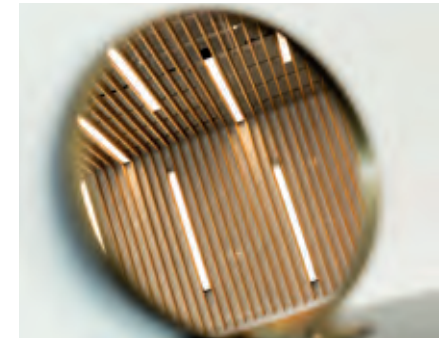
FURNITURE



FIXTURES



FIXTURES



URBAN BISTRO'S



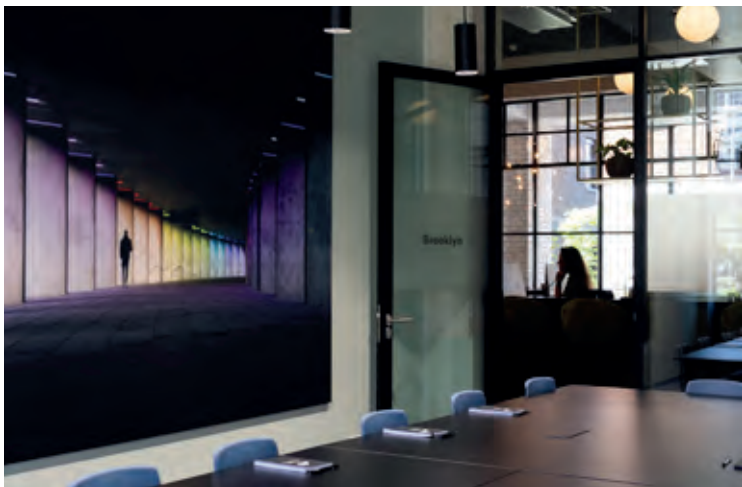
Our recipe for your happy moments. With Urban Bistro's we serve you every moment of the day. All day breakfast, lovely lunches, seasonal dinners and celebrating cocktail parties. Catch your happy vibe.

EVENT SPACES

Drive your purpose and make your project a reality. Product launches, offsite team meetings or boardroom presentations. Inspiring locations with multifunctional possibilities to impress your audience.



VENUES



Just like a Multiplex, several venues with a flexible range of solutions to suit all types of events. Screening rooms, conferences, training sessions or video conferencing with colleagues and clients around the world. Everything for a truly memorable event with great food and flexible space to network and hold receptions.

***Fuel your
get-together session
at Frame Offices!
We will take care of
all your needs down
to the last detail.***

Frame Offices

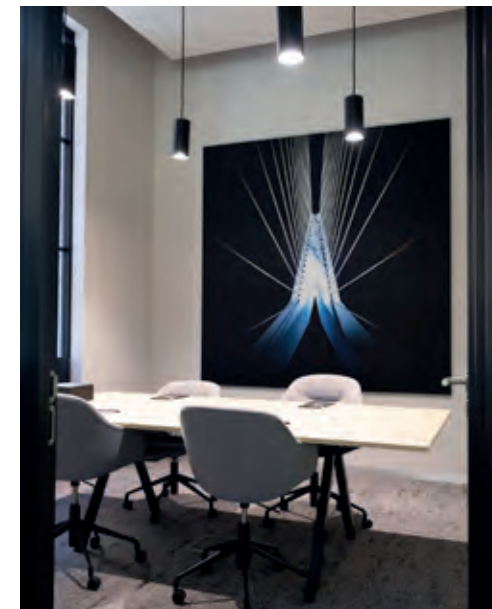


MEETING ROOMS

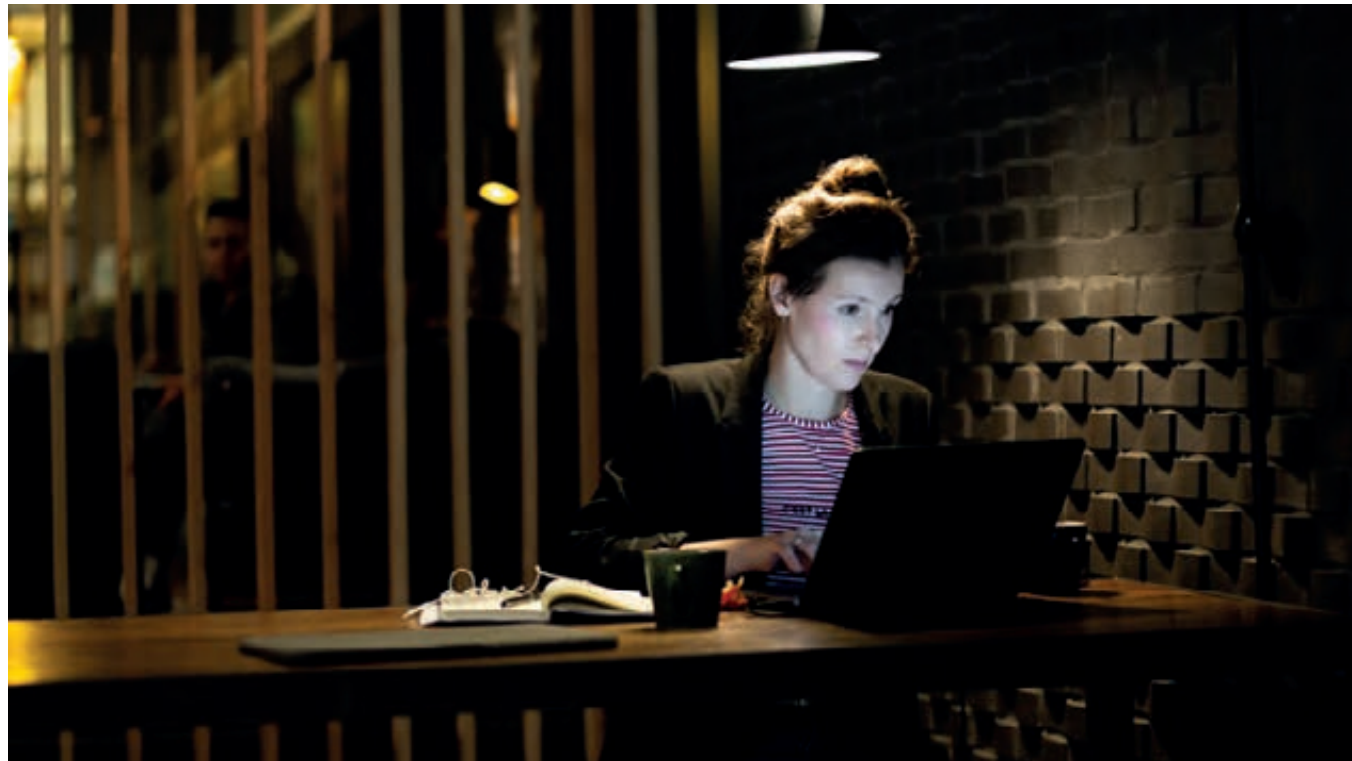


Fresh up your meeting outcomes. Minute or discrete board meetings, brainstorm sessions, job interviews, selection days or phenomenal events. We offer various meeting rooms each in its own size and appearance, and all with state-of-the-art equipment.

Fuel your get-together session at Frame Offices! Small intimate or grand phenomal meeting rooms. Up to 100 meeting rooms across the Netherlands in the middle of the urban jungle, next to Central Stations or in the rural retreat.

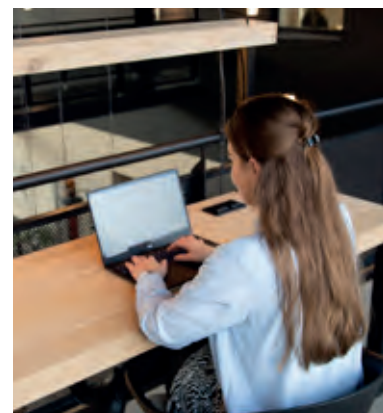
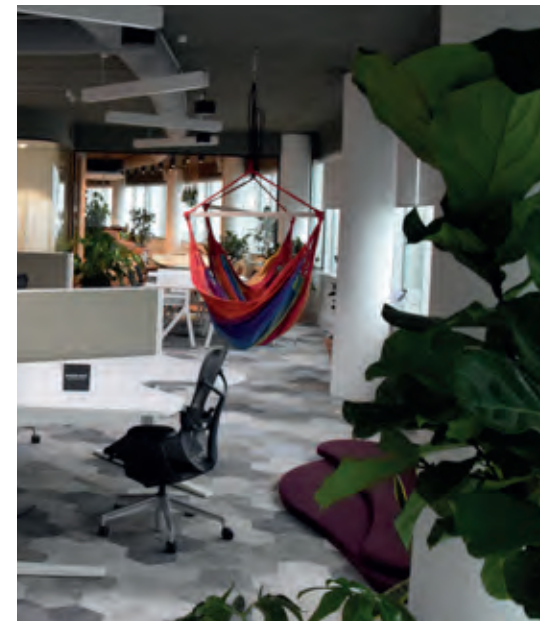


OFFICES



We understand the requirements of today's talent differ from tomorrow's business strategies. Flexibly scaling and working will make companies most valuable over the next decade. For companies with a future focus Frame Offices offers turnkey workplace management and outsourced services.

A workplace that works for you. Whether you are a solo entrepreneur with great ambition or a SME company with international targets. Whether you are a multinational renting several floors and still wanting to remain flexible. Frame Offices takes care of all your Real Estate needs and provides you full-service, turnkey workplace management.





Performance is driven by offering choices. Experience the positive impact of design on building stronger business relationships, providing your employees ease of collaboration and choice where they work, fostering their sense of autonomy.

A TRIBUTE TO YOUR WORKPLACE

COMMON AREAS



Shared by many, our common areas feel like a center of a city. Double heights, catchy lighthouses, curious corridors and five-star lobbies.

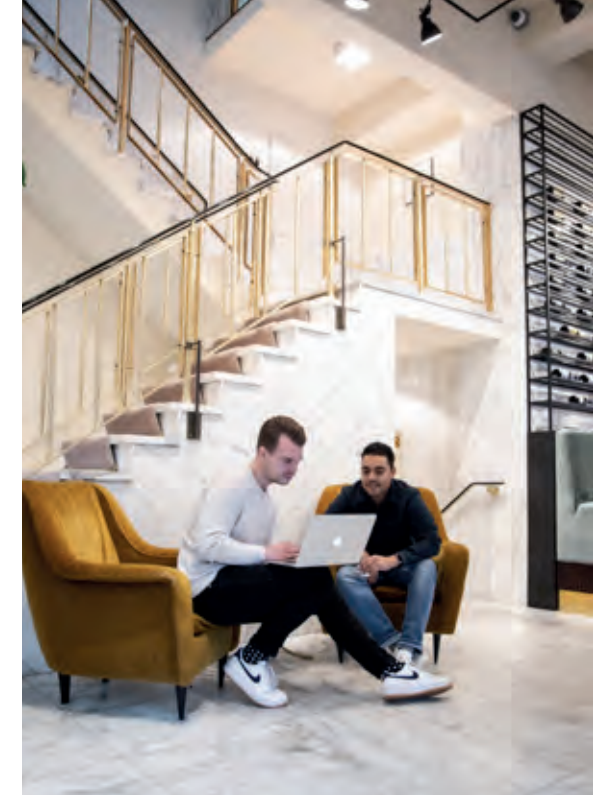
Lobbies and entrances are the first things we see as soon as we step foot inside an office building. So, it is very important that they create a lasting and welcoming impression, so your business guests know they are in the right place! Innovative, functional, and distinctly relevant structures, environments and objects characterize our stunning entrances.



PUBLIC SPACES



The common area holds the key to your workplace happiness. Don't get used to short lunch breaks and eat away from the desk. We make the common office pantries extremely cosy and inviting for mindful lunchtime rituals. People from different companies come together to enjoy casual social interactions. Good design can encourage and enable such interactions in a safe, organic way. A variety of seating options are dotted around the common areas, so people can lounge comfortably as they enjoy their self-made lunches. It is a site of social gathering



Circulation and movement can be choreographed, to add architectural interest and to define a change in place.

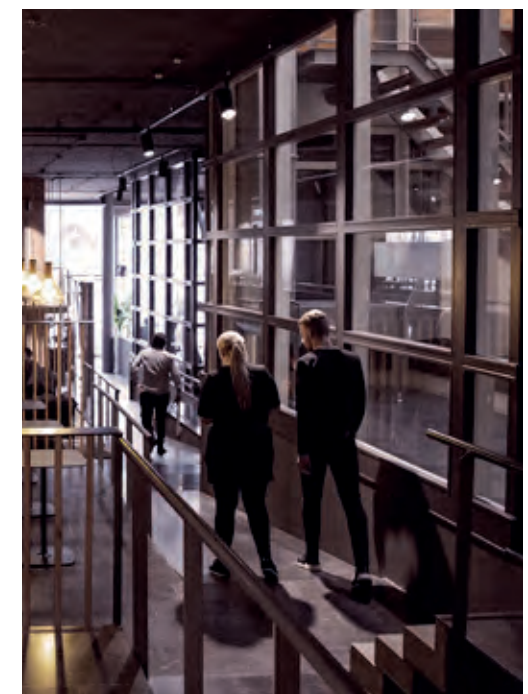
Frame Offices



CIRCULATION SPACES



As is often thought, circulation spaces require little attention – it is the space between spaces. However, beyond function, movement, and efficiency those circulation spaces can be so much more. It can even be choreographed to define a change in place, make people slow down, or provide a focus point. A staircase can become an architectural feature and an item of furniture can merge into space and interrupt the shortest way. The sequence of spaces, thresholds, and atmospheres encountered through movement keeps every m² interesting, inspiring, and positive in ambience. Even for spaces between spaces!





Frame Offices differs every location, so none of them are the same. Great and inspiring design reinforces working culture and gives greater leverage in attracting talent. Also having a variety of workspaces to choose from is directly connected to a great workplace experience.



WHY IT WORKS



The growing appeal of flexible workspace to businesses of all sizes is inevitable. Places that work matter. It is also a blessing to transform static, dull and grey office buildings into places that do things for people. Places work when locations have a soul, an active community, and become a place of economic significance. In short, places that work are the future.

COMMUN



Frame Offices designs open activation programs to tailor the property to the local needs and culture of commercial tenants. Event activation strengthens the community, all visible in the app.



Realtime dashboard with the Frame Offices app. We take care of all aspects your property needs, such as experienced tenant management, technical service, financial knowledge, economic terms, branding, and great hospitality.



ICATION



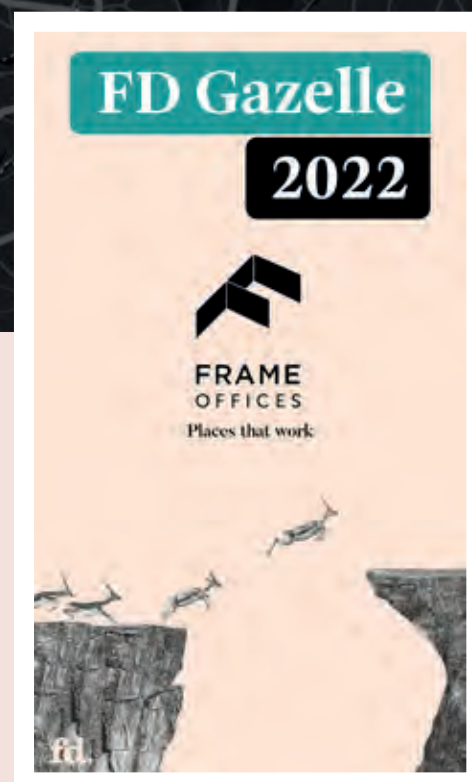
AWARD

Wellbeing Award - Flexible Offices

In the Pharos building the well-being of employees is an important topic. By thoughtful building design, we've created an energetic environment for employees to collaborate and work while contributing to their physical and mental health.



In 2022 Frame Offices has been named as an FD Gazelle. Every year the Financieel Dagblad presents the FD Gazellen Awards to the fastest growing companies in the Netherlands. To qualify for this award, companies must achieve a revenue growth of at least 20% three-years in a row. Employee growth and profitability are also considered.



COLOPHON

CONCEPT, REALISATION	Michiel Lamens
DESIGN	Dieuwertje Bakker en Bob van der Plas
COPY	Eleonore Westenberg
PRINT	IVA group
PHOTOGRAPHY	Antim Photography Aron Weidenaar Fotografie Marnix Postma Photography
PUBLISHER	Frame Offices +31 010 261 7 261 contact@frameoffices.com
	©2022 Frame Offices

DISCLAIMER

All endeavors have been made to trace portrait rights and copyright owners. Should, however, a portrait or image reference has been omitted: please do not hesitate to contact Frame Offices. Frame Offices will correct such information in future editions.



www.frameoffices.com